



C3204ET PLUS C3202ET PLUS

3.2m Affordable Solvent Solution
Dismountable body for low transportation cost



Billboard



Lighting Signage



Car Wrapping



Bus Shelter



Epson T3200
Natural 600dpi



Industrial Media System



Anti-Collision Unit



Efficient IR Dryer

C3204ET PLUS

C3202ET

| ITEM | SPECIFICATION | | | |
|-------------------------|--|----------------------|--------------------------|----------------------|
| Model | C3204ET PLUS | | C3202ET PLUS | |
| Print Head | 4 x Epson T3200-U3-S 7pl | | 2 x Epson T3200-U3-S 7pl | |
| Ink | SET1 / SET2 Eco-Solvent Ink | | | |
| Ink Supply System | GnTek Negative Pressure Recirculation System | | | |
| Printing Width | Max. 3200mm | | | |
| Media Type | Banner, Frontlit, Backlit, Vinyl, Film... | | | |
| Media Delivery System | Automatic Media Feeding and Taking up System with Air Shaft | | | |
| Drying System | Pre, Mid, Post and Extended Heater Plus Intelligent IR Drying System | | | |
| Printing Speed | 300x1200dpi | 201m ² /h | 300x1200dpi | 100m ² /h |
| | 300x1200dpi | 168m ² /h | 300x1200dpi | 84m ² /h |
| | 300x1800dpi | 120m ² /h | 300x1800dpi | 60m ² /h |
| | 300x2400dpi | 96m ² /h | 300x2400dpi | 48m ² /h |
| Data Interface | External: USB3.0; Internal: Fiber Optical | | | |
| Working Environment | Temp. 23°C~29°C, Humidity: 50%~80% | | | |
| Software | FlexiPRINT / Onyx (Optional)...+GZ Printer Manager | | | |
| Power | Single Phase, 50Hz/AC, 220V±10%,13A (Printer)+34A (IR Dryer) | | | |
| Packed / Installed Size | LxWxH(mm): 5800x1150x1125 / 4847x1132x1532 | | | |
| G.W. / N.W. | 1248KGS / 965KGS | | | |

Specifications are liable to change without prior notice. The printing speeds are measured in 1.6 m width printing.



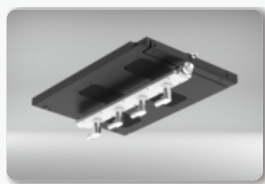
Epson T3200 U3-S Print Heads

Equipped with Epson innovative T3200 U3-S head, with 3200 nozzles, built-in heater for unparalleled color performance and smooth ink flow.



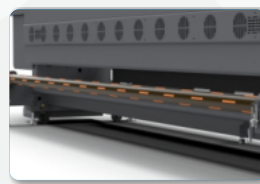
GnTek Negative Recirculation

GZ dual negative pressure recirculation system with pressure balancing unit and pressure protection unit assures steady ink delivery and minimum maintenance.



Suction Nozzle for Head Cleaning

Featuring a narrow slit, suction nozzle with a vacuum fan moves back and forth beneath the print heads to effectively remove all residual ink.



Optimized Media Handling System

The feeding system with strong media holders is suitable for both light and heavy media. Taking up system with air shaft & tension bar enables precise and steady rewinding.

Zhejiang Gongzheng Intelligent Equipment Co., Ltd.

Add: Miaobei Village, Yongjia County, Wenzhou City, Zhejiang Province, China 325102

Tel: +86-577-67319778

Email: gzsales@gongzheng.com

Web: www.gongzheng.com

Ver 2026.01.20



@GONGZHENG GROUP

Authorized distributor:

